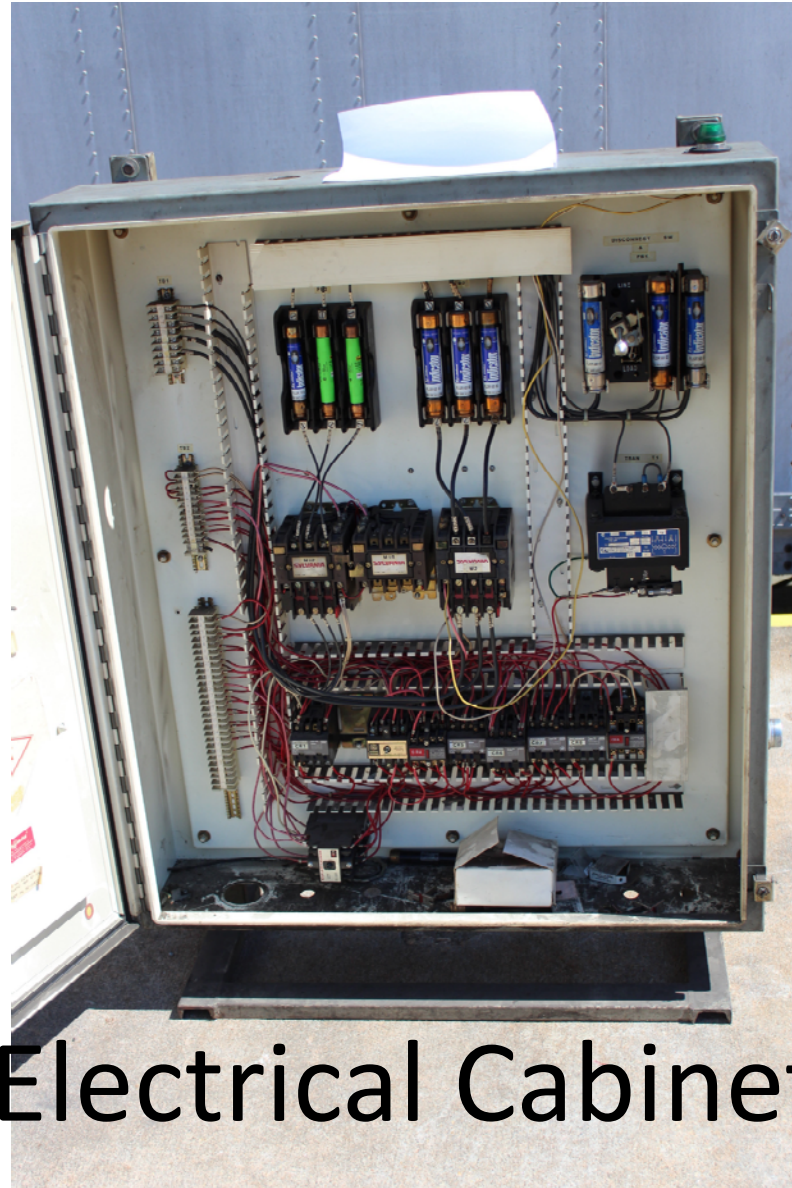


# The following is a list of the equipment used to produce the precure treads.

- Heintz PCP-3 hydraulic 3-opening 12 foot length; 12" overall width molds; 220V/60 hz/3 phase
- National Rawls hydraulic single wide platen press configured for two side-by-side 12" molds or one 25" width mold (recently rebuilt cylinders)
- 3-phase hydraulic pumps for each press
- NRM 3 Y, 50 HP DC extruder with conveyor and 2-zone temperature control (heat & well water to cool)
- Michelin water-bath cooler and conveyor for extrusions (never used)
- Refrigerating chiller for use with extruder or above water bath (never used)
- RAMCO Sander modified to sand precure rubber with infeed & outfeed roller conveyor
- RAMCO Sander not yet modified to sand rubber
- RAMCO Sander incomplete unit suitable for parts or rebuild
- 3-each double width 24-tier rolling tread prep carts
- 2-each single width 20-tier rolling tread prep carts
- Vulcan Tread Splice Press
- Approximately 200 feet of 9" wide roller conveyor with motor drive capability and motor drive (not in use)
- Available supplies including poly film, Sanding belts, etc.
- 2 tables for trimming flashing



Electrical Cabinet



Electrical Cabinet



Control Cabinet



Tread Guide



National Tread Press



National Tread  
Press Controls



National  
Tread Press





National Tread Press



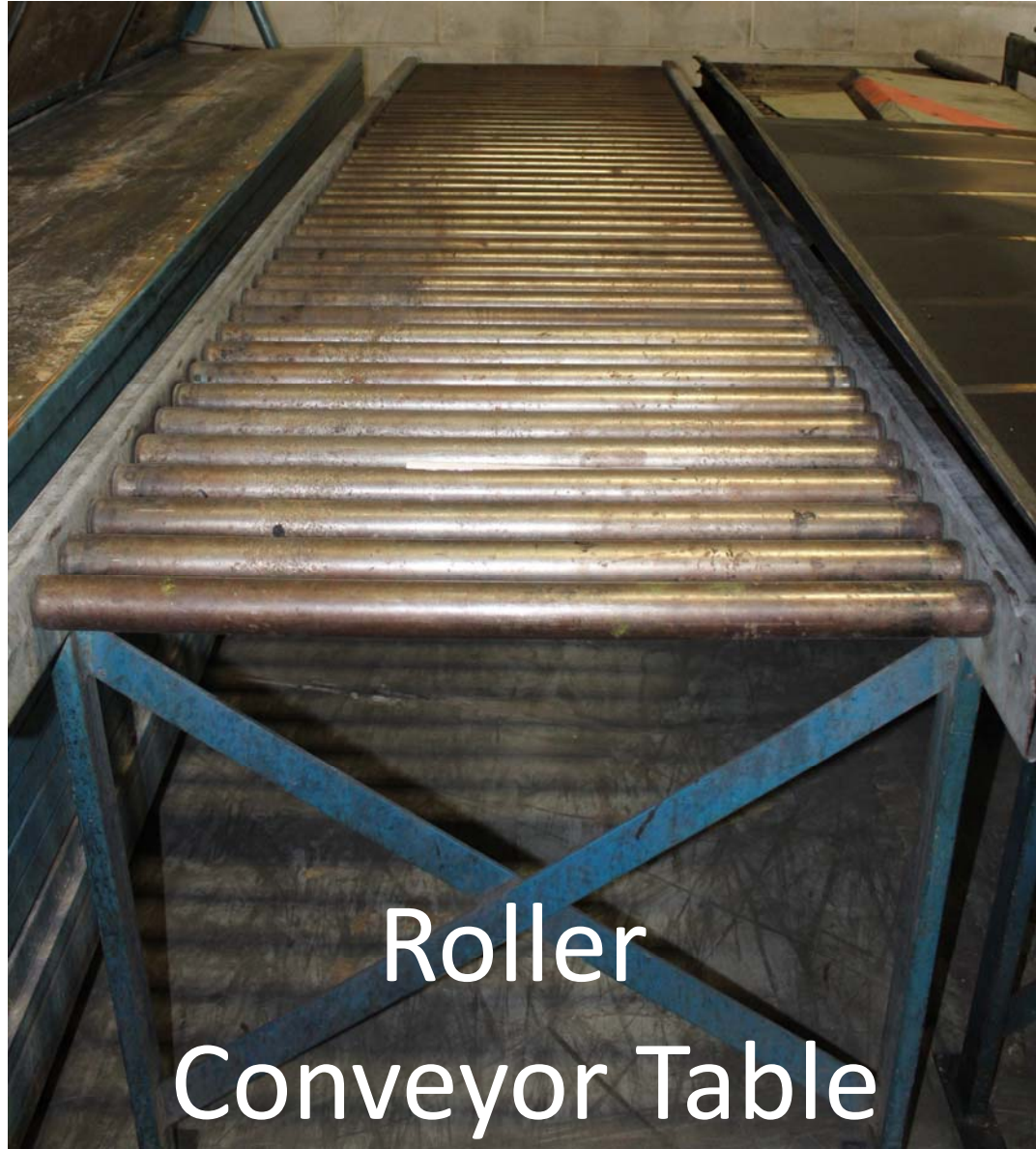
Heintz 3 Platen Tread Press



Heintz 3 Platen Tread Press



Heintz 3 Platen Tread Press



Roller  
Conveyor Table



Extruder Conveyor



Extruder  
Conveyor



Tread Tray





Tread Tray



Tread Tray



Matrix  
Preparation  
Table



NRM Cold  
Feed Extruder  
12.1



NRM Cold  
Feed Extruder  
12.1



NRM Cold  
Feed Extruder  
12.1

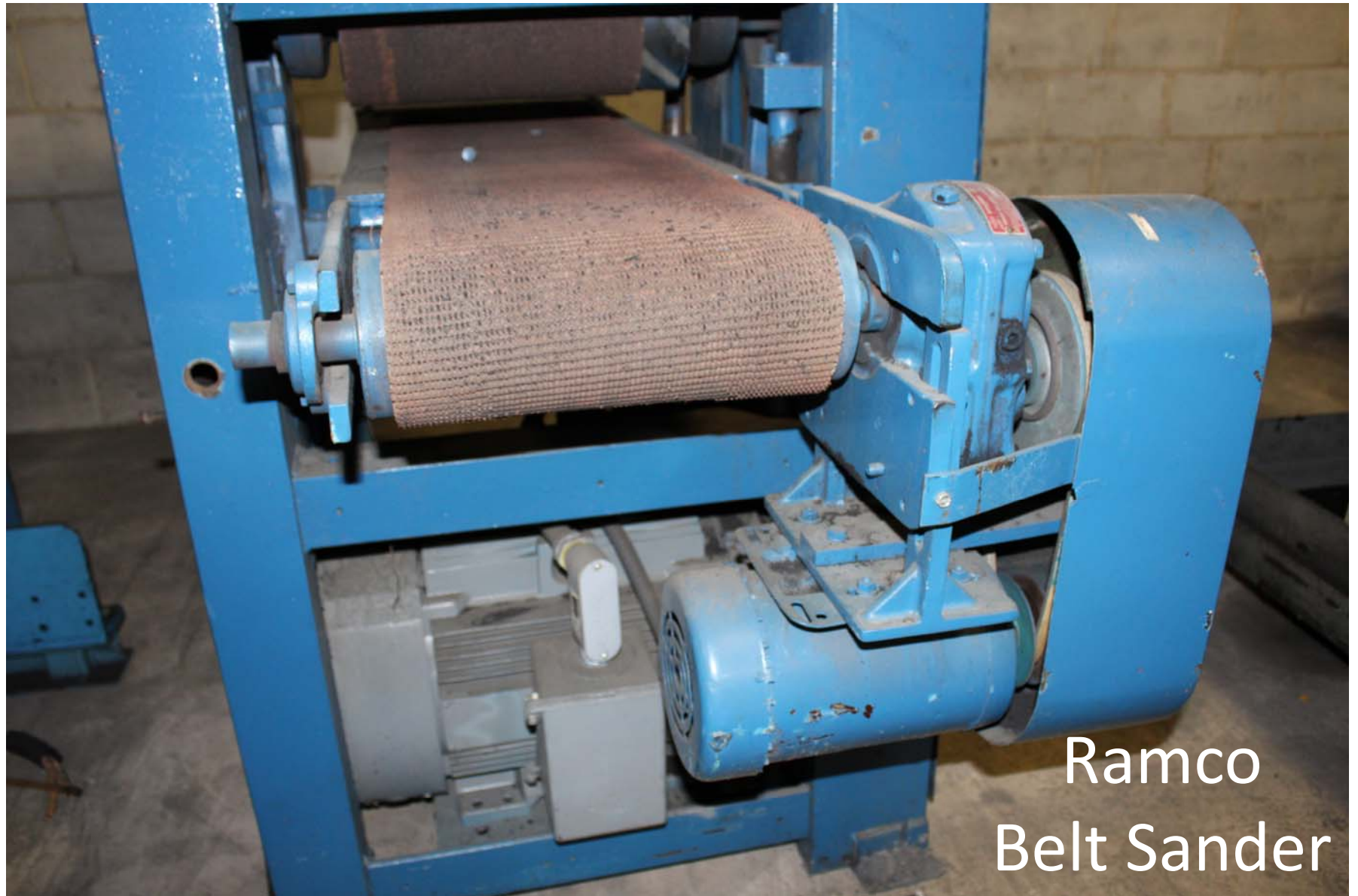


Hydraulic Pump



Hydraulic Pump



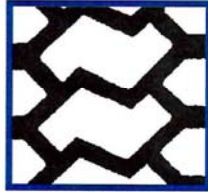


Ramco  
Belt Sander

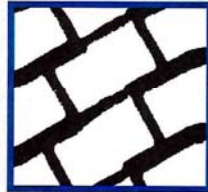


Ramco  
Belt Sander

## MIXED SERVICE TREAD DESIGNS



**WESTAR \***  
24/32" TD



**ROCK LUG SPEC**  
28/32" TD



**WASTE HAUL LUG**  
26/32 & 28/32" TD

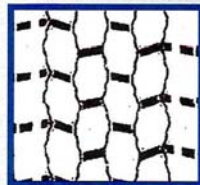


**WASTE HAUL RIB**  
26/32" TD

## DRIVE TREAD DESIGNS



**DURA-TRAC**  
22/32" TD



**PRECURE 182**  
26/32" TD



**ROADMASTER**  
23/32" TD



**PRECURE RDL**  
26/32" TD



**PRECURE UD-2**  
26/32" TD



**PRECURE P124**  
22/32" TD

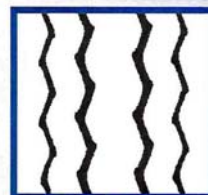


**GRIPPER**  
22/32" TD

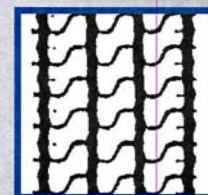
## RIB TREAD DESIGNS



**CENTRON +**  
16/32" TD



**A301 S/A**  
17/32" TD



**ULTRA-LITE**  
12/32" TD















