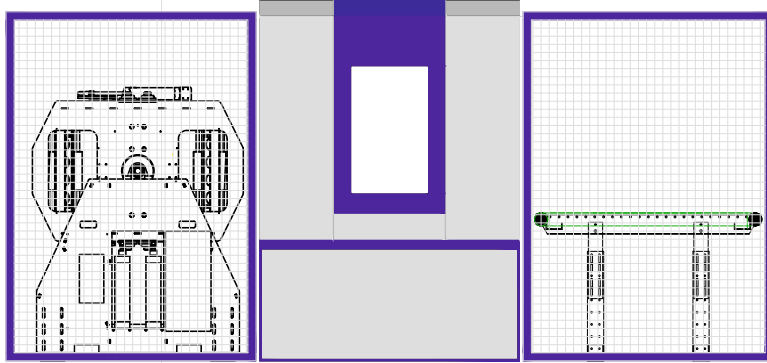


ITT-2

The industrial solution
for medium to highest sized production quantities



ITT-2 1080, 1280 and 1680

The industrial solution for most efficient testing of all kind of tire and casing types in the new tire industry as well as industrial retreading. The focus of an ITT-2 setup with its dynamic and fast linear systems is on industrial applications in full-time operation (24h/7d).

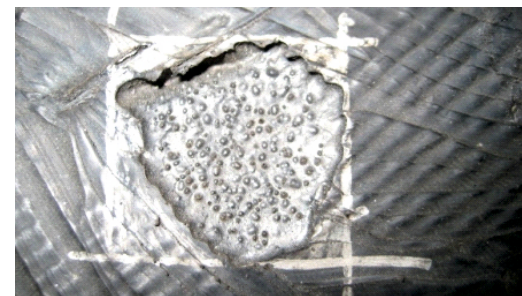
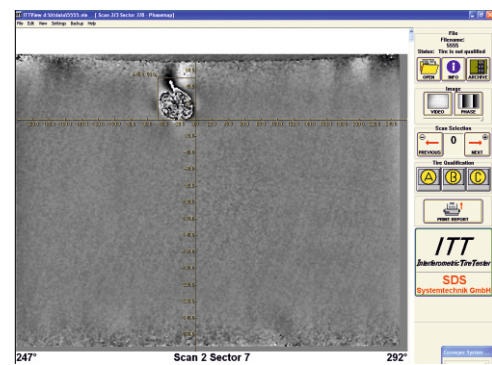
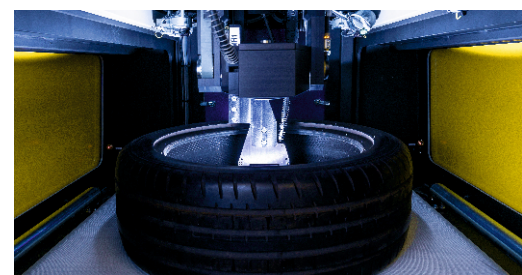
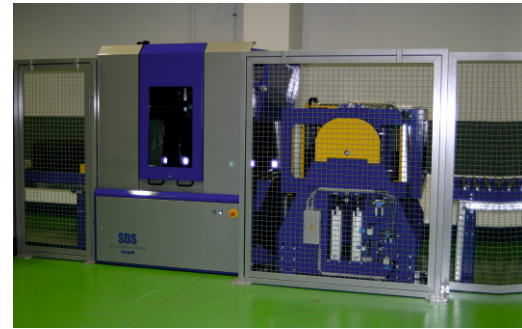
The mechanical setup is available in three specific sizes (maximum diameter of 1080mm, 1280mm or 1680mm), optimized for a maximum throughput.

Typically, an ITT-2 is equipped with two or three measuring heads and an inline turn over fixture (TOF) for automatic bead-to-bead inspection, operated stand-alone with loader and unloader or embedded into a conveyor system (SDS or from customer) with defined interfaces for material and data handling.

Optional features -such as automatic barcode reading, tire contour detection, automatic anomaly detection with specific evaluation zones- allow a fully automated operation.

Your benefits

- modular design, adaptable to your specific requirements
- extendable for future expanding
- easy operation by user-friendly software
- HMI with touchscreen operation
- automatic tire contour detection for automated tire testing or predefined setting selection
- different test procedures for individual and specific tire testing
- special features such as
 - external crown inspection for aircraft and race tires
 - 45° shearing angle for maximum sensitivity
 - adapted image format for specific tire sizes



SDS
Systemtechnik
GmbH

NON-DESTRUCTIVE TIRE TESTING BY SDS TECHNOLOGY

Technical data and options

Features	ITT-2 1080/1280	ITT-2 1680
Tire Types	motor cycle-, passenger car-, truck-, aircraft tires; radial and bias construction	
Testing Area	crown, shoulder and upper sidewall from inside without flipping	
	full bead to bead and turn-up area with tire flipping (manually or automated)	
Defect Types	all kind of separations, trapped air, corrosion, loose wires, undercure, blister,...	
Display of Results	overview of all scans, single scans, single sector display as result- and video image	
Data Storage	automatic, ISO compliant, backup manager for archiving to various media	
Loading / Unloading	two door setup with inline turnover fixture (TOF) and pneumatic loader / unloader	
Turn Over Fixture	with additional loading conveyor modules for reversed loading function* or offline with round about	
Conveyor System	optional various modules, individual layouts and several interfaces for logistic solutions	
Barcode	optional handheld barcode scanner or automated solutions, open data interfaces (FAR, etc.)	
Automatic Anomaly Detection	optional with adjustable sensitivity, evaluations zones, polygonized area, statistical output (CVS)	
Computer System / PLC	Industrial PC, Windows 7 / WAGO or optional Beckhoff, Rockwell*	
Remote Control	via Internet	
Number of Measuring Heads	2 or 3	
Dimensions L x W x H (mm)	4400 x 2400 x 2200 / 4800 x 2400 x 2400	6000 x 2900 x 2500
Weight	2300 kg / 2350 kg	3900 kg
Electrical Connection 3PH / 50-60Hz	200 - 520 V / 16 - 32 Amp or country specific	
Pneumatic Connection	R1/2", min. 7 bar (6 bar on request)	
Ambient Temperature **	+10°C to +35°C	
Color (RAL)	blue (5002), silver (9007) or customer preference	
min. innerØ - max. outerØ	Ø 12" - 1080 / 1280 mm	Ø 12" - 1680 mm
min./max width (mm)	100 mm - 460 / 560 mm	100 mm - 660 mm
Test capacity tires/hour. crown 2, 3 head ***	65, 65 / 60, 60	50, 50
Test capacity tires/hour. bead to bead 2, 3 head ***	22, 33 / 20, 30	17, 25

* details on request ** higher temperature ranges with air condition,

*** ITT-2 configuration typically always as double door setup, double or triple head configuration and with automatic turnover fixture (TOF)

test cycle with with 8 sectors / 40 mbar, typical rest time and Windows 7; tires are loaded continuously

SDS Systemtechnik GmbH
Rudolf-Diesel-Strasse 7
D-75365 Calw-Stammheim
Phone +49 (0) 7051 / 93154-0
Fax +49 (0) 7051 / 93154-99
www.sds-systemtechnik.com
info@sds-systemtechnik.de



Central Marketing
5001 Puddledock Rd.
Prince George, VA 23875

Phone 804.733.4684
Fax 804.733.8603

www.central-marketing.com
edd.burleson@central-marketing.com